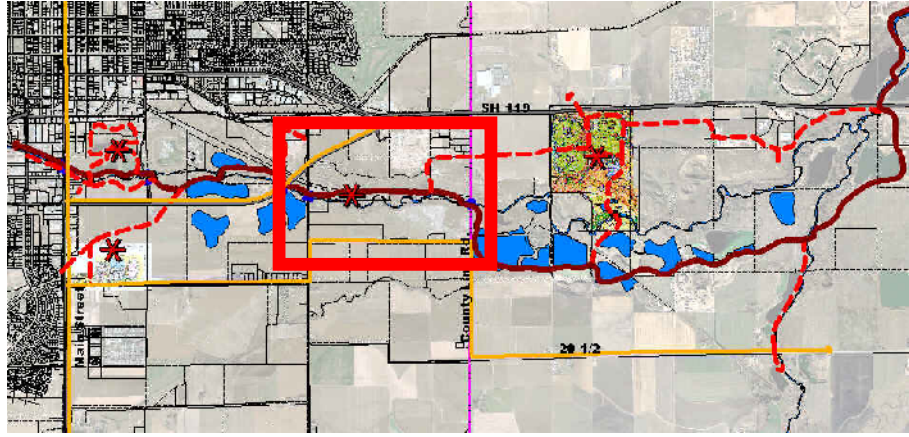


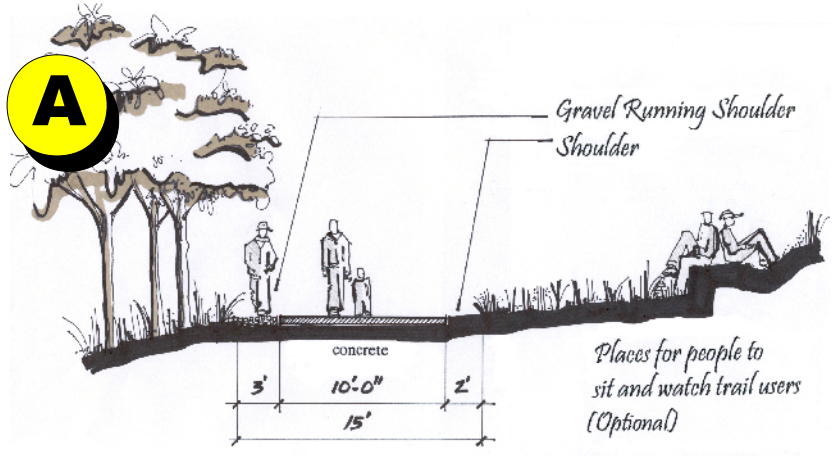
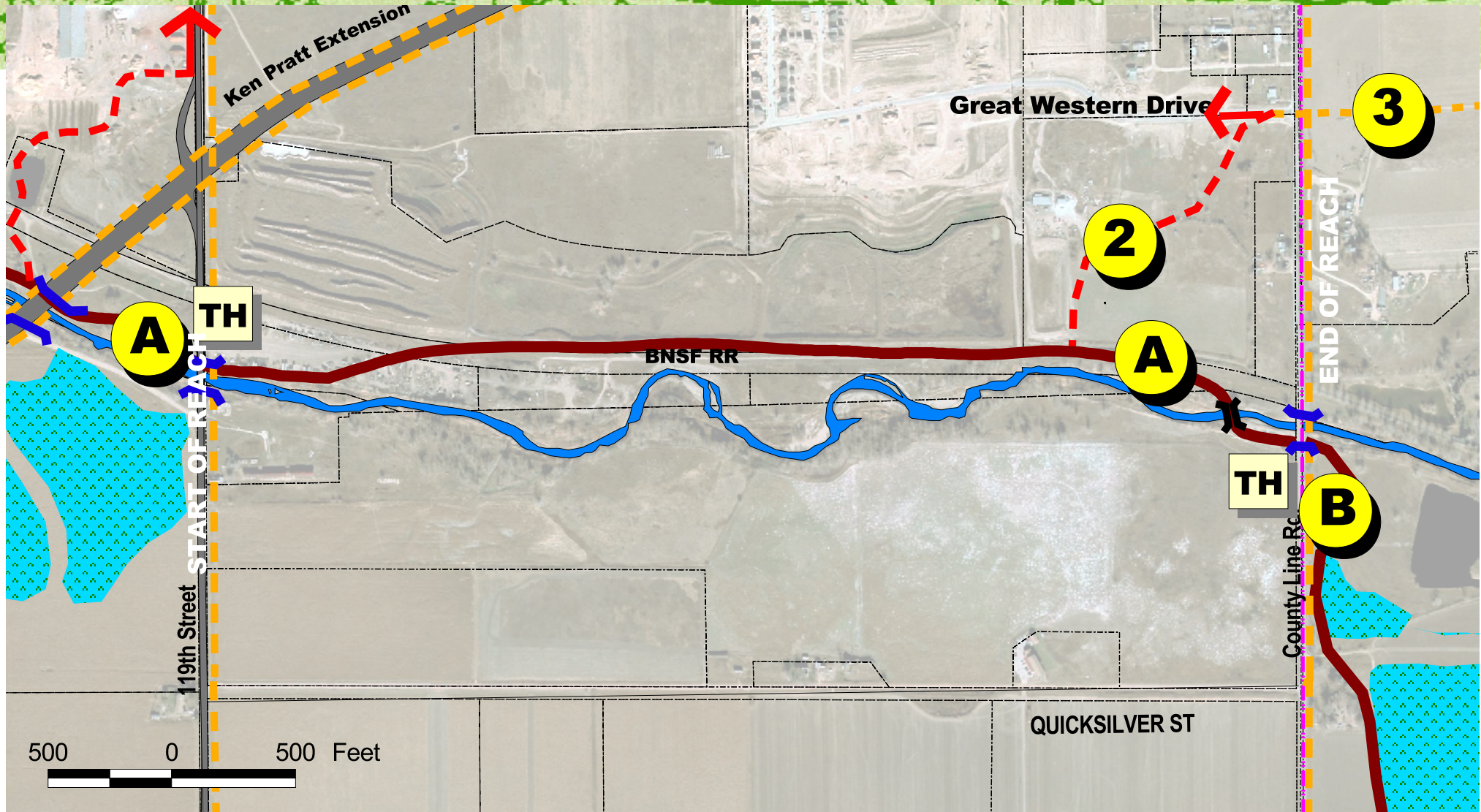
SUBURBAN REACH

Trail System

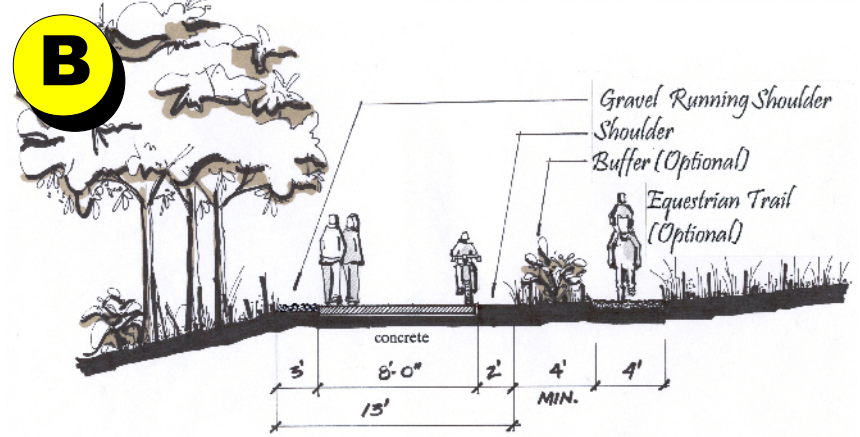


REGIONAL CONTEXT:

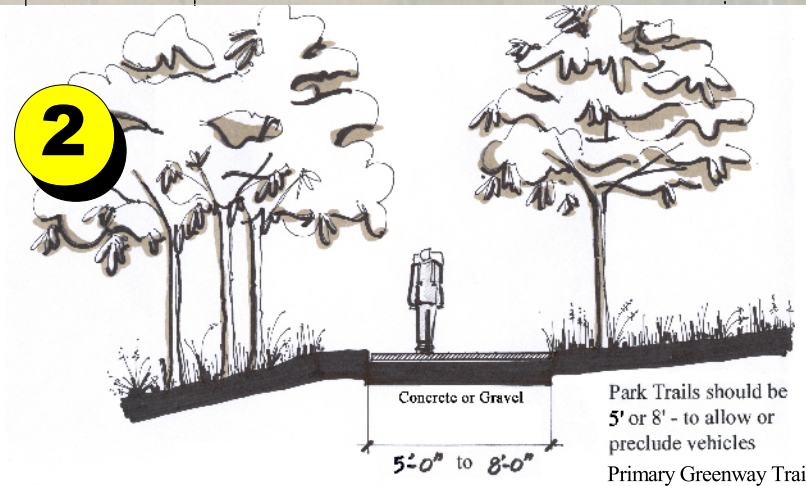
- Greenway Through Trails
- Primary Greenway and Park Trails
- Roadway Trails
- Trailhead (Parking)



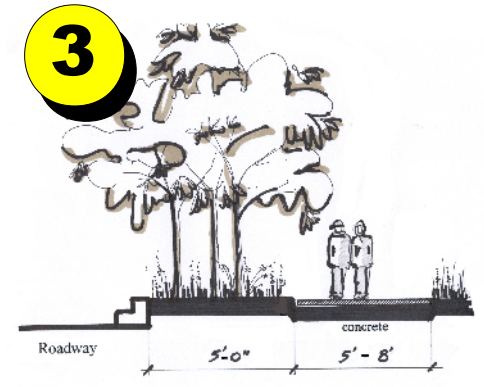
Urban / Suburban Through Trail



Rural Through Trail



Greenway Trail / Park Trails



Bypass Route

Park Trails should be 5' or 8' - to allow or preclude vehicles
Primary Greenway Trail to be 8' concrete



St. Vrain Greenway Master Plan