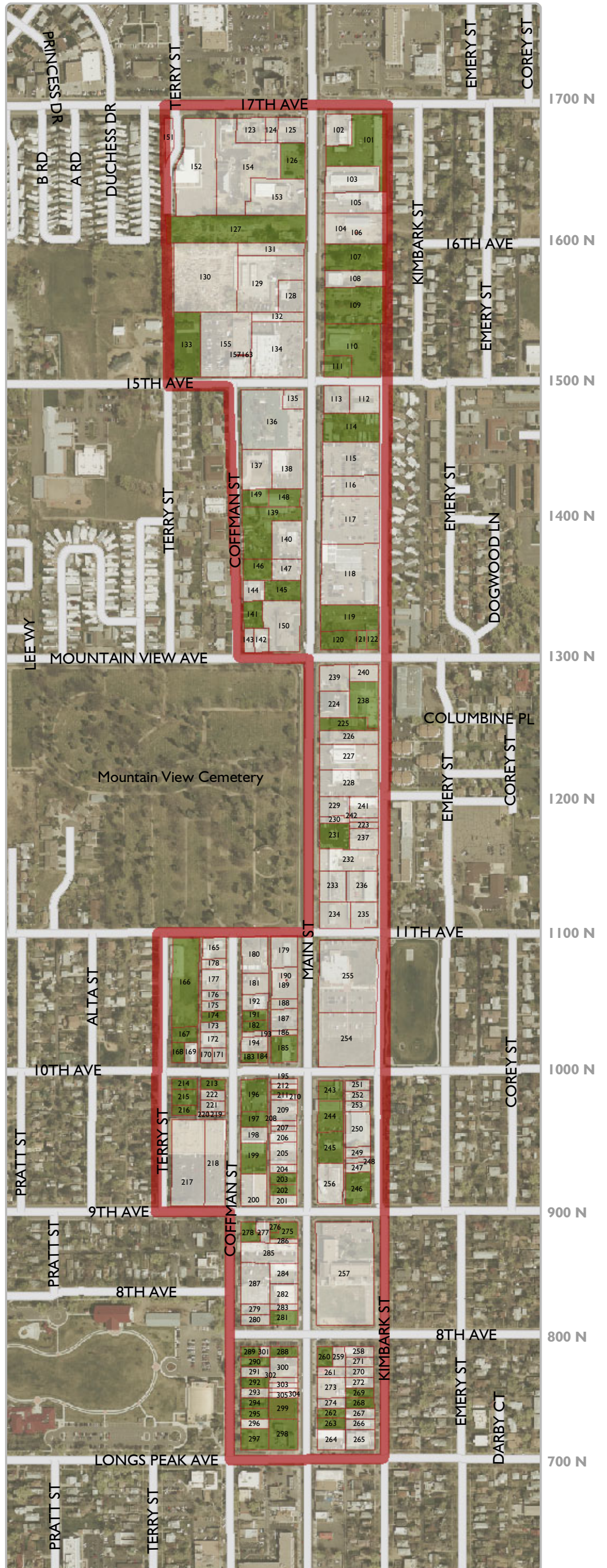


# Longmont Midtown Redevelopment Plan Conditions Survey

## a. Deteriorating Structures

Notable deterioration to one or more of the following:

- Roof
- Walls, Fascia, Soffits
- Foundation
- Gutters/Downspouts
- Exterior Finishes
- Windows & Doors
- Stairways/Fire Escapes
- Mechanical Equipment
- Loading Areas
- Fences/Walls/Gates
- Other Structures



[Draft 22 Sep 05]