

Welcome!

FOX MEADOWS PARK

(Working Name Only)

Public Meeting #1

August 30, 2023





City Project Manager:
Steve Ransweiler
Angela Brill



Design/Build Project Lead:
Ian Mestdagh
Tallan Traylor



ASSOCIATES

Landscape Architects:
Tyler Kiggins
Alex Arseneau
Ling Zhang



TONIGHT'S MEETING AGENDA

1. Presentation

- Project Overview
- Site Context + Background
- Potential Park Elements
- Project Timeline/Next Steps

2. Q&A

3. Open House

PROJECT OVERVIEW

- 9 acres
- Park name TBD
- Future elementary school to the east



ADJACENT PARK PROGRAM



Stephen Day Park

- Multi-purpose field
- Sport Courts
- Small Scale Playground
- Picnic Shelter
- Splash Pad
- Off-leash Dog Area
- Bike Park/Skills Course
- Restroom
- Trails/Paths

Union Reservoir

- Sport Court
- Small-scale Playground
- Small Shelter
- Fishing Pier/Fishing
- Dog Off-leash Area
- Restroom

Rothrock Dell Park

- Ball field
- Sport Court
- Small-scale Playground
- Small Shelter
- Horseshoe Pit
- Restroom

ADJACENT PARK PROGRAM



Sandstone Ranch

- Multi-purpose Field
- Ball Field
- Sport Court
- Small-scale Playground
- Small Shelter
- Splash Pad
- Fishing Pier/Fishing
- Dog Off-leash Area
- Restroom
- Internal Pathway

Clark Centennial Park

- Multi-purpose Field
- Ball Field
- Sport Court
- Small-scale Playground
- Roller Hockey Rink
- Restroom
- Internal Pathway

Kensington Park

- Sport Court
- Small-scale Playground
- Small Shelter
- Disc Golf Course
- Restroom
- Internal Pathway

FOX MEADOWS PARK



Existing Conditions / Opportunities and Constraints

- Adjacent to Deerwood Drive and the homes along Tanager Circle
- Existing trail separates the park from the future school site to the east
- Stormwater detention in a portion of the park



Existing trail along the eastern edge of the park



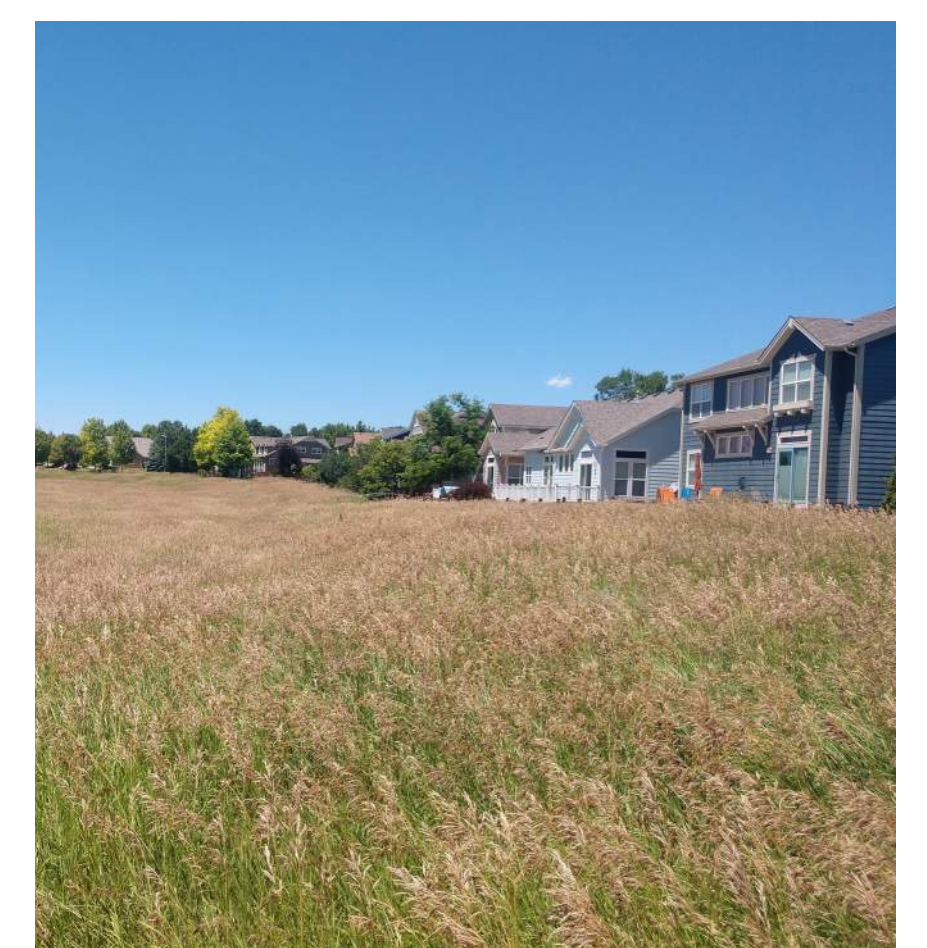
Southwestern edge of the park looking east



Southern park edge



Stormwater detention area



Northern park edge

WHAT WOULD YOU LIKE IN YOUR PARK?



Parking

Slides

Nature Play

Arboretum

Disc Golf

Demonstration Garden

Restrooms

Volleyball

Skate Park

Multi-Purpose Field

Outdoor Fitness

Disc Golf

Trailhead

Basketball

Open Lawn

Community Garden

Volleyball

Playground

Internal Paths

Horseshoe Pit

Small Shelter

Public Art

Climbing

Off-Leash Dog Park

THE PARK WILL INCLUDE...



Restroom Facility



Picnic Shelters

City of Longmont - St. Vrain Greenway Picnic Structure



Playground Area



Park Benches



Lawn Area



Native Prairie Vegetation and Trails

+ MORE!

LANDSCAPE, TRAILS + PLANTING

● Which images are your favorite?

● Which images do you dislike?



Formal Promenade Walk



Soft Surface Trails



Concrete Trails



Stone Steps in Native Grasses



Educational Nature Signage



Large Open Lawn with Park Trees



Grove of Cottonwood Trees



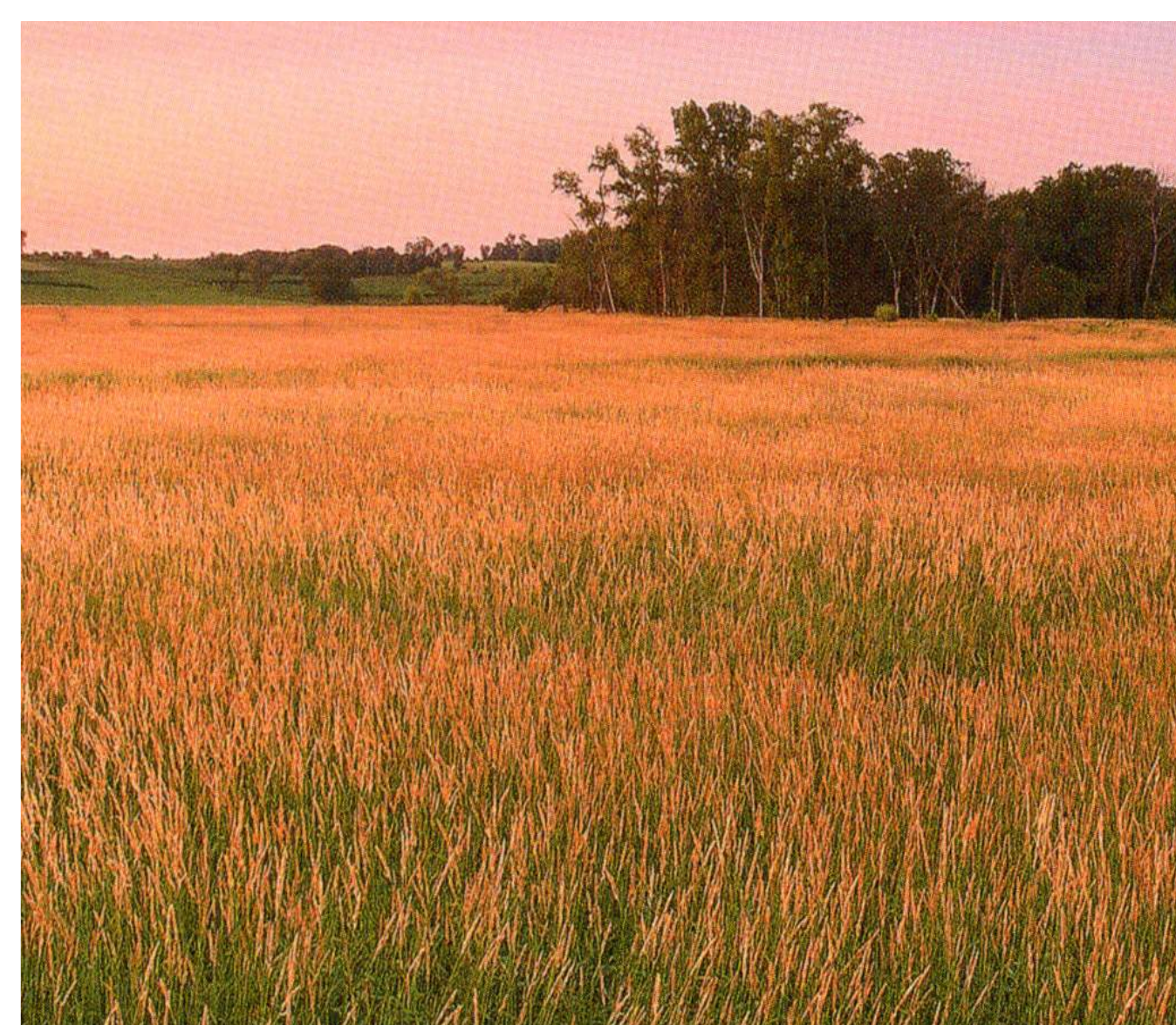
Wildflower Meadow



Low-Water Demonstration Garden



Pollinator Habitat



Open Grassland Prairie



Playful Landforms

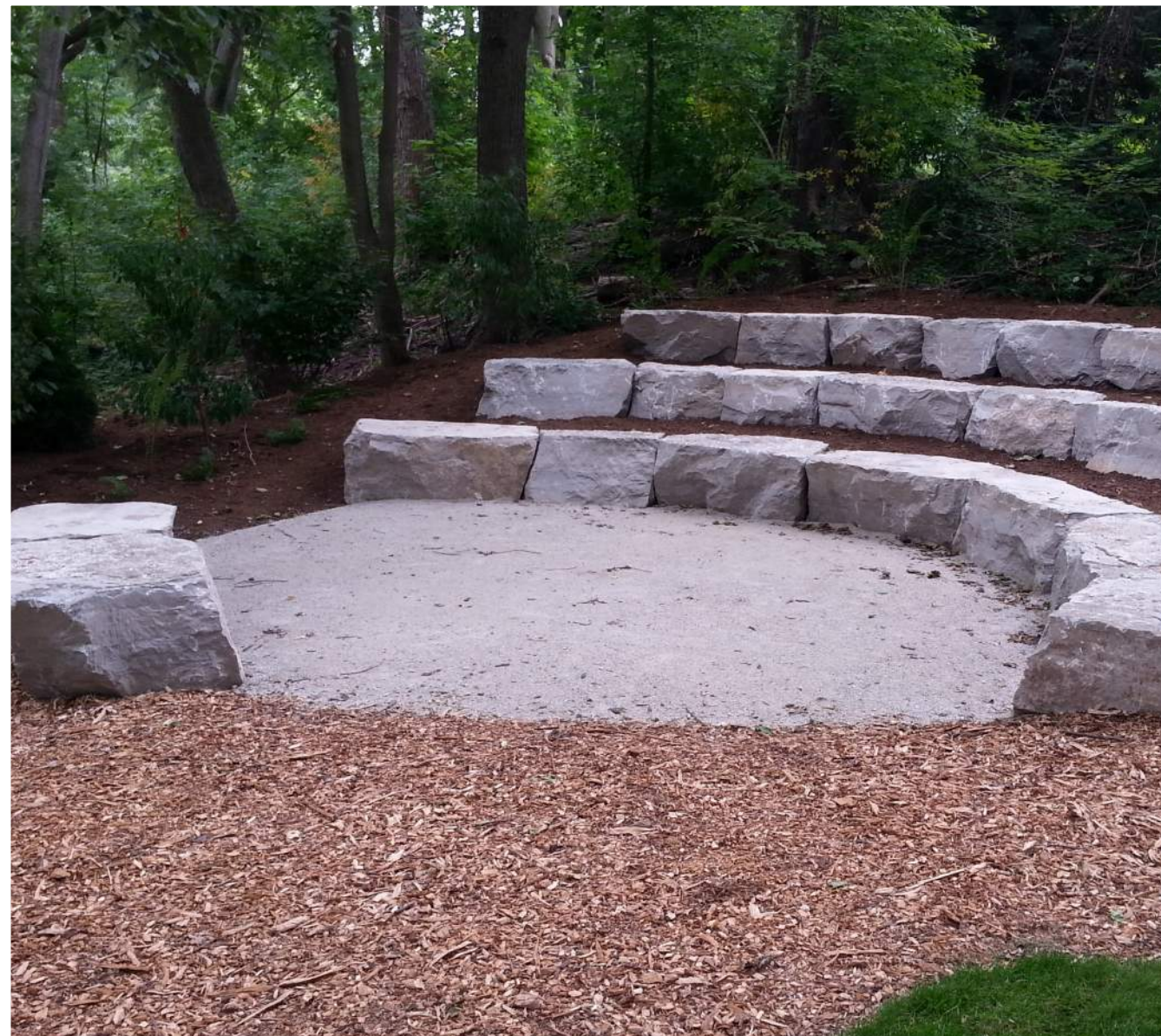


Formal Annual/Perennial Flower Garden

OTHER IDEAS?

PARK AMENITIES

● Which amenities do you want to see in the park? ● Which do you want to avoid including?



Outdoor Classroom/Gathering Area



Natural Stone Seating



Small Picnic Shelters



Large Group Picnic Shelter



Hammocks



Bike Maintenance Station



Picnic Tables



Public Art



Habitat Discovery



Nature Discovery Area



Fenced Dog Area

OTHER IDEAS?

SPORTS + GAMES

● What activities or games do you want to play in the park? ● Which do you want to avoid including?



Horseshoes



Disc Golf (~3 Practice Holes)



Basketball



Youth Sports Field



Climbing Wall



Sledding Hill



Sand Volleyball Court



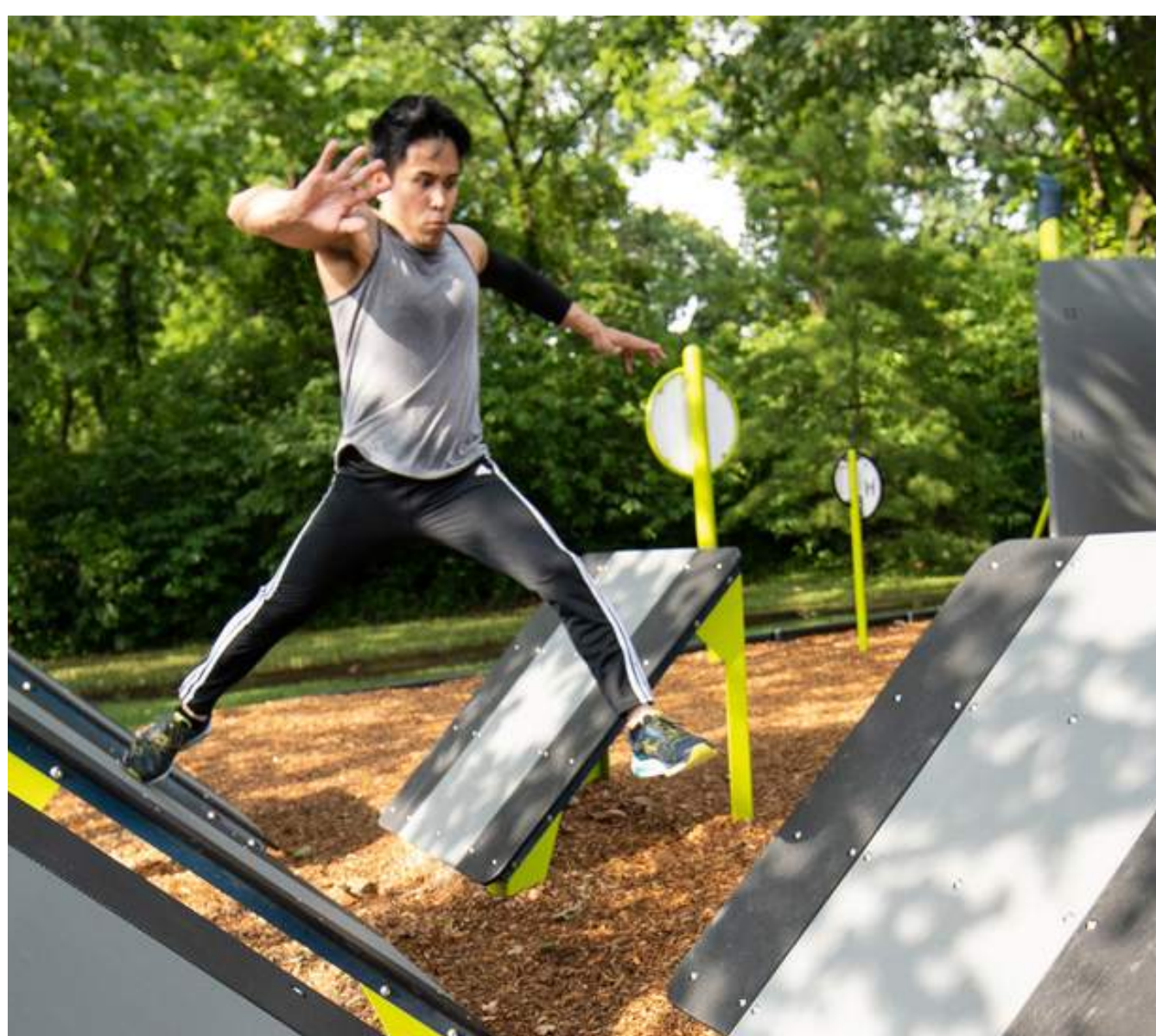
Bocce Court



Mountain Bike Skills Course



Skate Features



Parkour/'Ninja Warrior' Course



Fitness Stations



Outdoor Table Tennis

OTHER IDEAS?

PLAYGROUND ELEMENTS

Which types of elements do you want to see included in the playground area?



Accessible Play



Planted Embankment Nature Play



Tall Play Tower With Slides



Sand Play



2-5 Years Play Zone



Nature Play Structure



Swings



Music Play



Net Climbing



Tunnel Feature



Art Play



Spinner



Wavy Walk

OTHER IDEAS?

PROJECT TIMELINE



Construction Starts June 2024!

TELL US WHAT YOU THINK!

NEXT MEETING

Wednesday, September 13, 2023

6:30 PM

Trail Ridge Middle School

